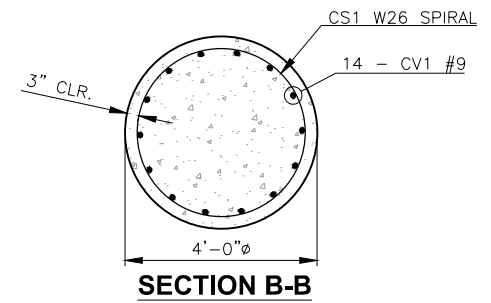
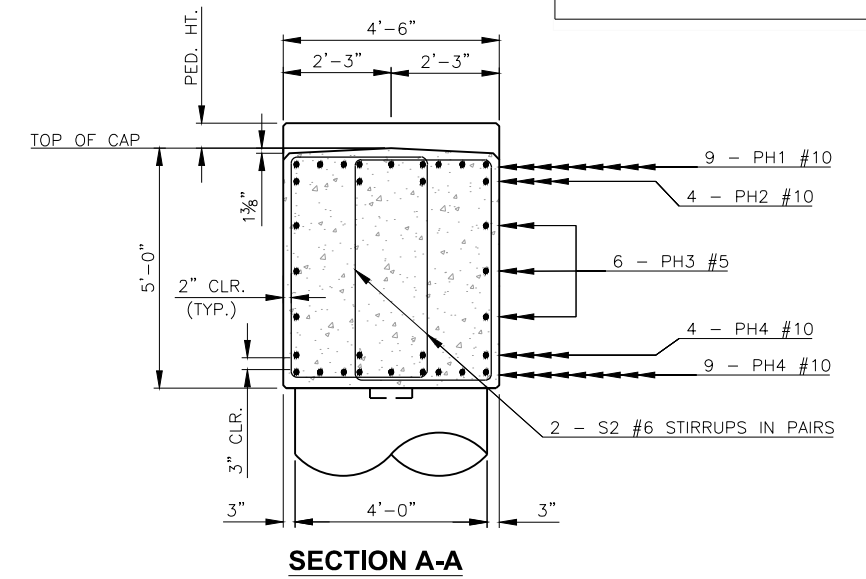
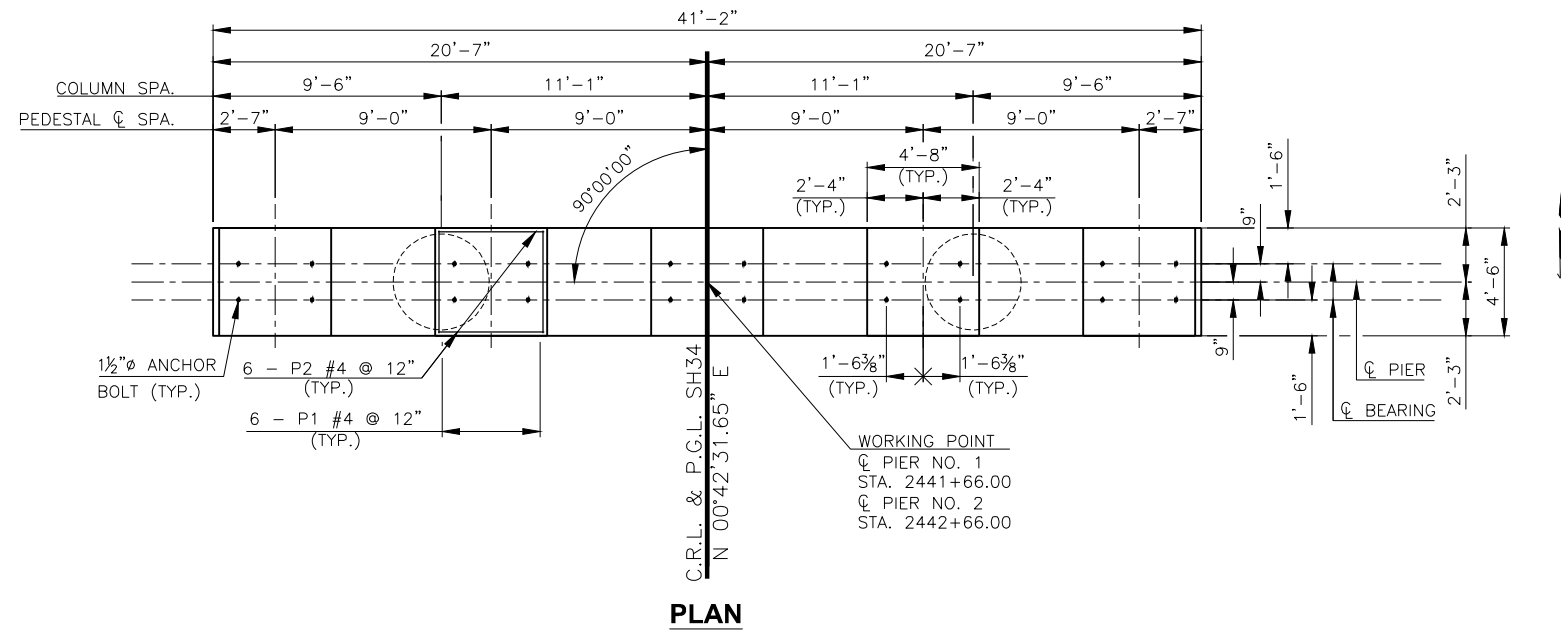


DESCRIPTION	REVISIONS	DATE

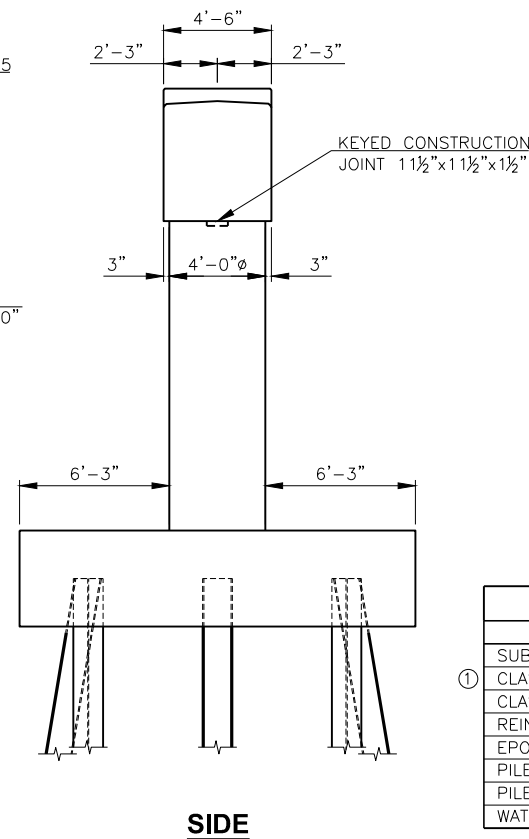
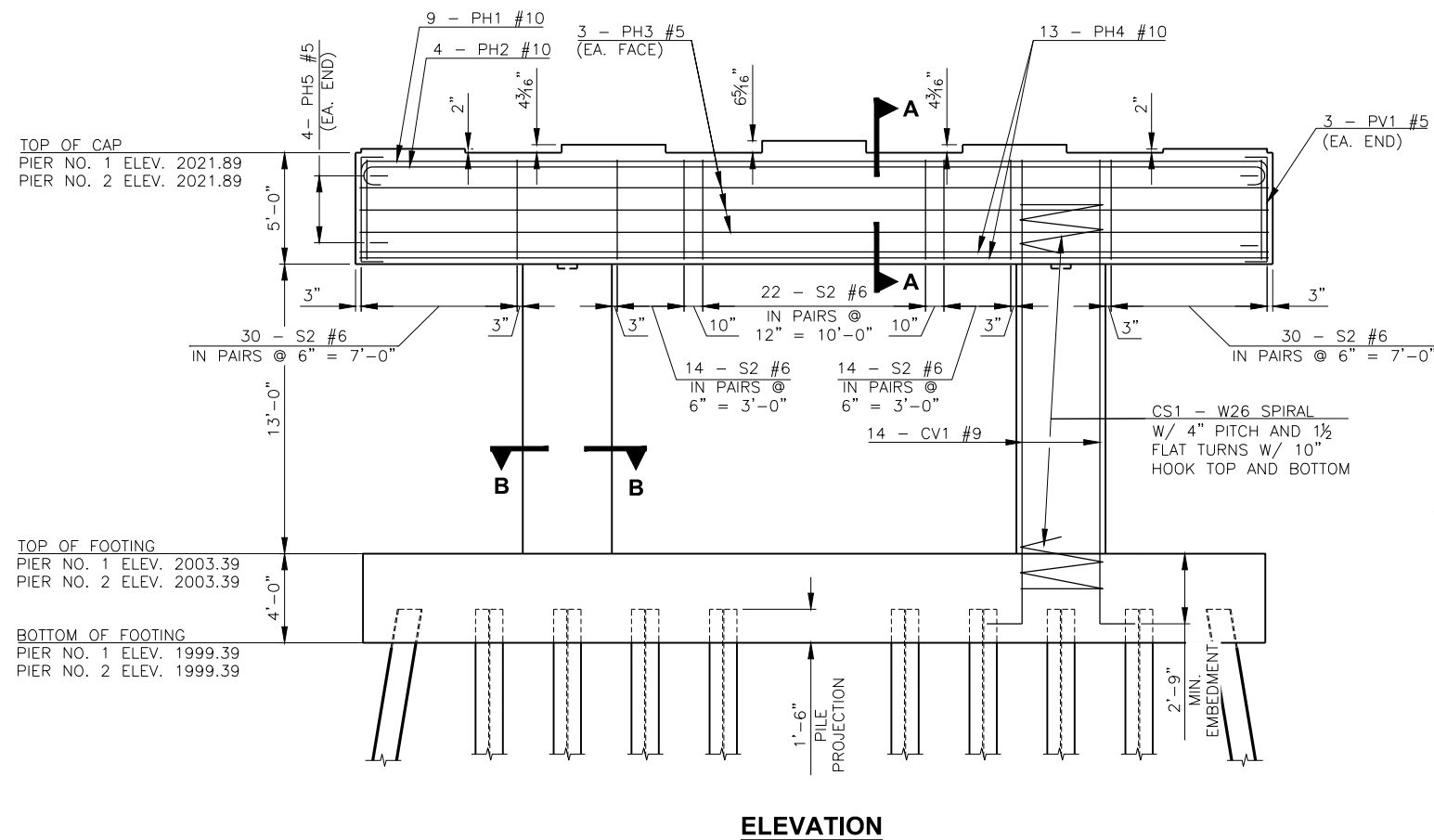


NOTE:
FOOTING REINFORCEMENT OMITTED FOR CLARITY. FOR ADDITIONAL FOOTING DETAILS, SEE SHEETS 28 AND 29.

NOTE:
FOR BAR BENDS AND BAR LIST, SEE SHEET 30.

NOTE:
FOR SUBSTRUCTURE EXCAVATION, SEE SHEET 24.

NOTE:
FOR PILING STEEL PLATE REINFORCING TIP DETAILS, SEE SHEET 30.



PIER QUANTITIES				
ITEM	UNIT	PIER NO. 1	PIER NO. 2	TOTAL
SUBSTRUCTURE EXCAVATION COMMON	C.Y.	1,700	1,700	3,400
CLASS AA CONCRETE	C.Y.	111.1	111.1	222.2
CLASS A CONCRETE	C.Y.	35.5	35.5	71.0
REINFORCING STEEL	LB.	1,100	1,100	2,200
EPOXY COATED REINFORCING STEEL	LB.	26,090	26,090	52,180
PILES, FURNISHED (HP 14X89)	L.F.	2,010	1,890	3,900
PILES, DRIVEN (HP 14X89)	L.F.	2,010	1,890	3,900
WATER REPELLENT (VISUALLY INSPECTED)	S.Y.	75	75	150

① QUANTITY USED TO CONSTRUCT PIER COLUMNS AND FOOTING.

W26 COLUMN SPIRAL TO EXTEND 2'-0" MINIMUM INTO PIER CAP AND FOOTING.

THIS DRAWING IS PRELIMINARY IN NATURE. IT IS NOT A FINAL SIGNED AND SEALED DRAWING

DESIGN	J.W.H.	SH34 OVER N. PERSIMMON CREEK	WOODWARD COUNTY
DRAWN	Z.M.B.	BRIDGE A	
CHECKED	J.W.H.	PIER NO. 1 AND 2 DETAILS (SHEET 1 OF 3)	
APPROV.	T.A.C.		
SQUAD	CEC		
		JOB PIECE NO. 28827(04) SHEET NO. 27	